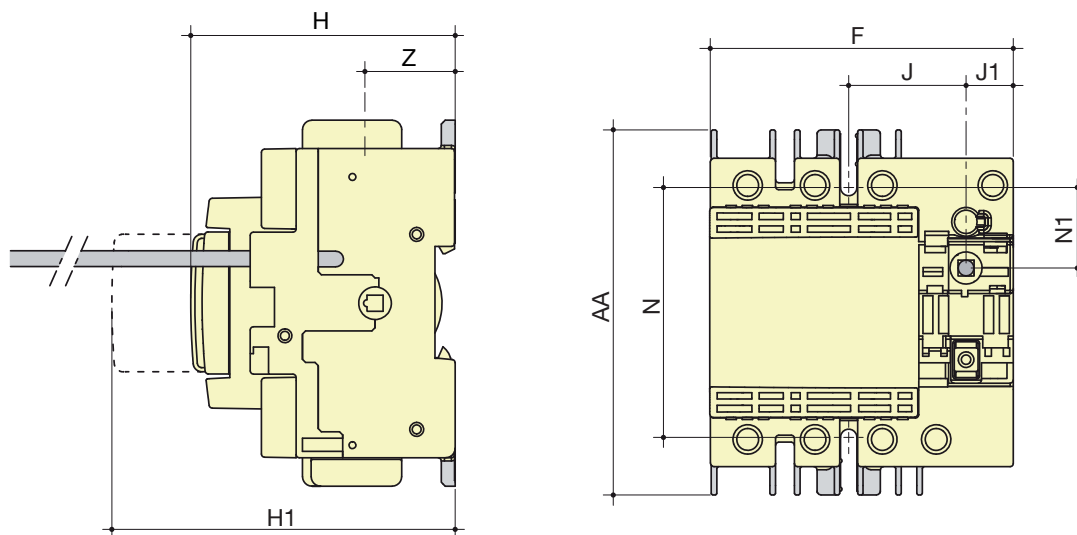


FUSERBLOC UL

Fusible disconnect switches UL and CSA
30 to 800 A

Dimensions (in/mm)

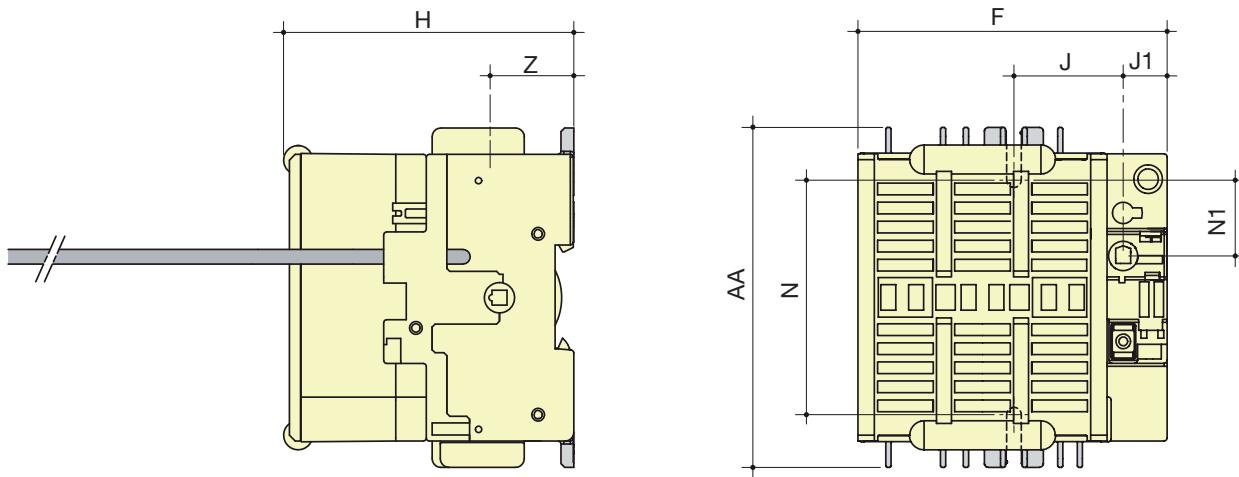
FUSERBLOC CD 30 A / CC - Frame size 1



fuser_605_a_1_X_cat

Rating (A) / Fuse	Unit	Switch body					Switch mounting		Connection	
		F	H	H1	J	J1	N	N1	AA	Z
CD 30 A / CC	in	3.78	3.28	5.19	1.47	0.59	3.13	1	4.56	1.12
	mm	96	83.5	132	37.5	15	79.5	25.5	116	28.5

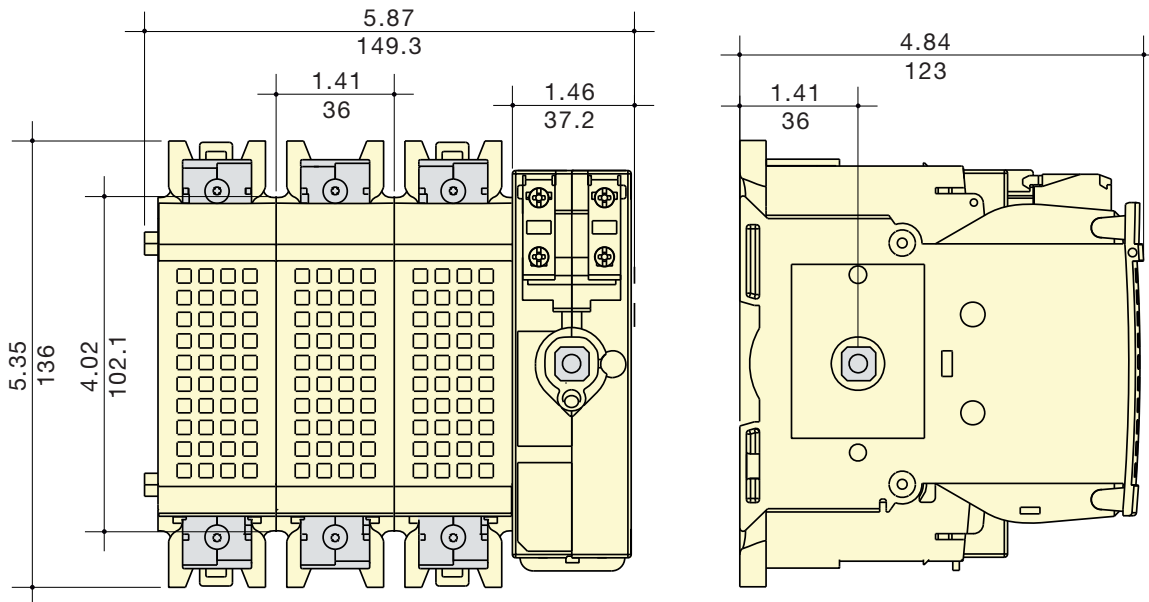
FUSERBLOC CD 30 A / J - Frame size 2



fuser_656_a_1_x_cat

Rating (A) / Fuse	Unit	Switch body				Switch mounting		Connection	
		F	H	J	J1	N	N1	AA	Z
CD 30 A / J	in	4.13	3.89	1.47	0.59	3.30	1	4.56	1.12
	mm	105	99	37.5	15	84	25.5	116	28.5

FUSERBLOC 30 to 60 A / J - Frame size 4



fuser-ul_001_a_1_x_cat

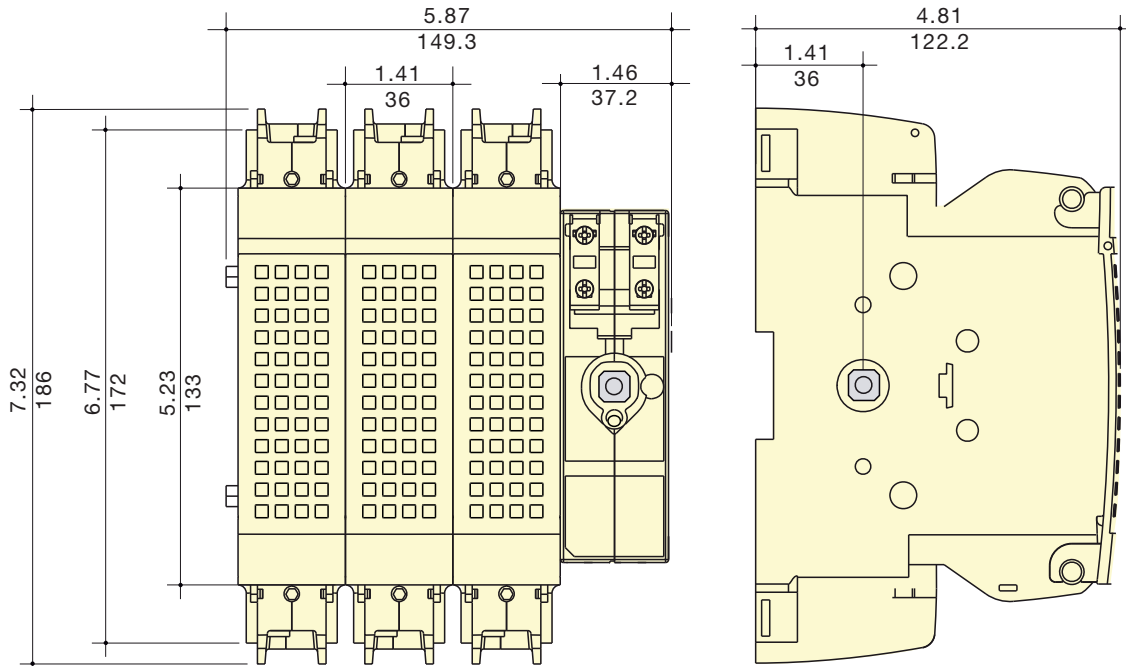
Note for width:
 For 2 pole device decrease overall width by 1.41"/36mm.
 For 4 pole device increase overall width by 1.41"/36mm.

FUSERBLOC UL

Fusible disconnect switches UL and CSA
30 to 800 A

Dimensions (continued)

FUSERBLOC 60 to 100 A / J - Frame size 5



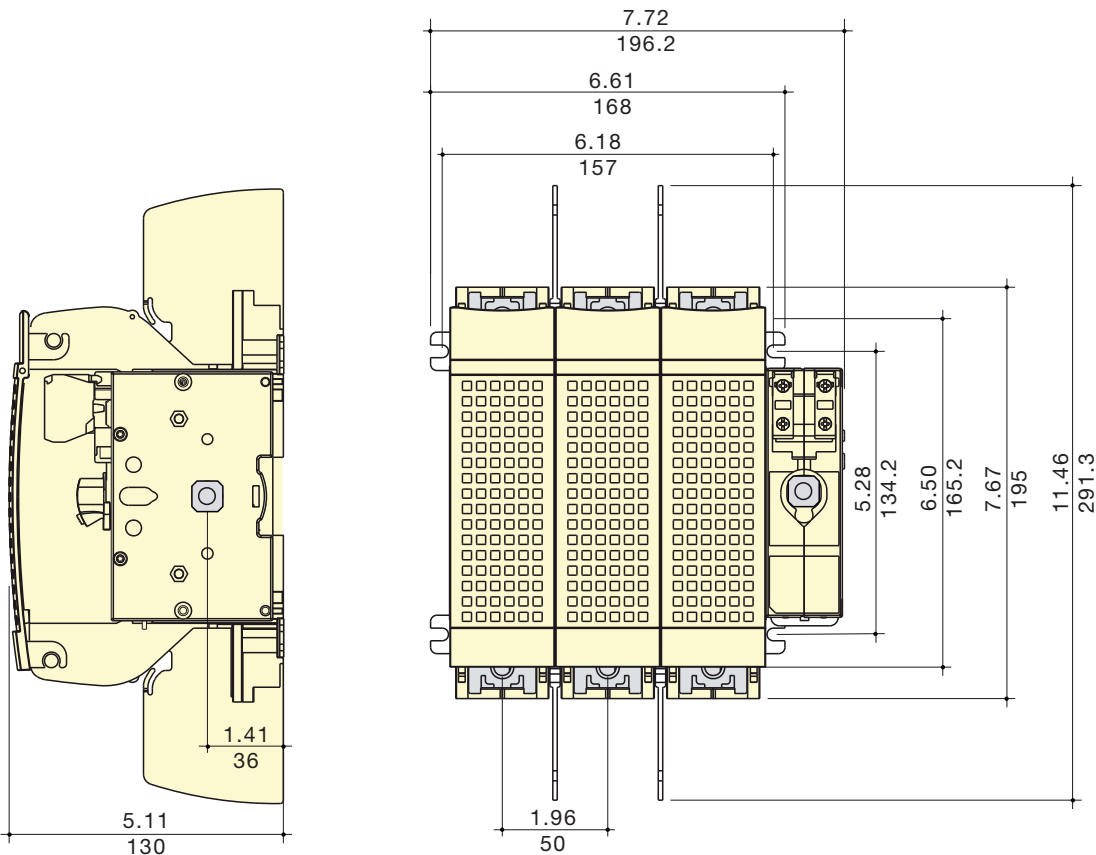
fuser-ul_002_a_1_x_cat

Note for width:

For 2 pole device decrease overall width by 1.41»/36mm.

For 4 pole device increase overall width by 1.41»/36mm.

FUSERBLOC 200 A / J - Frame size 6



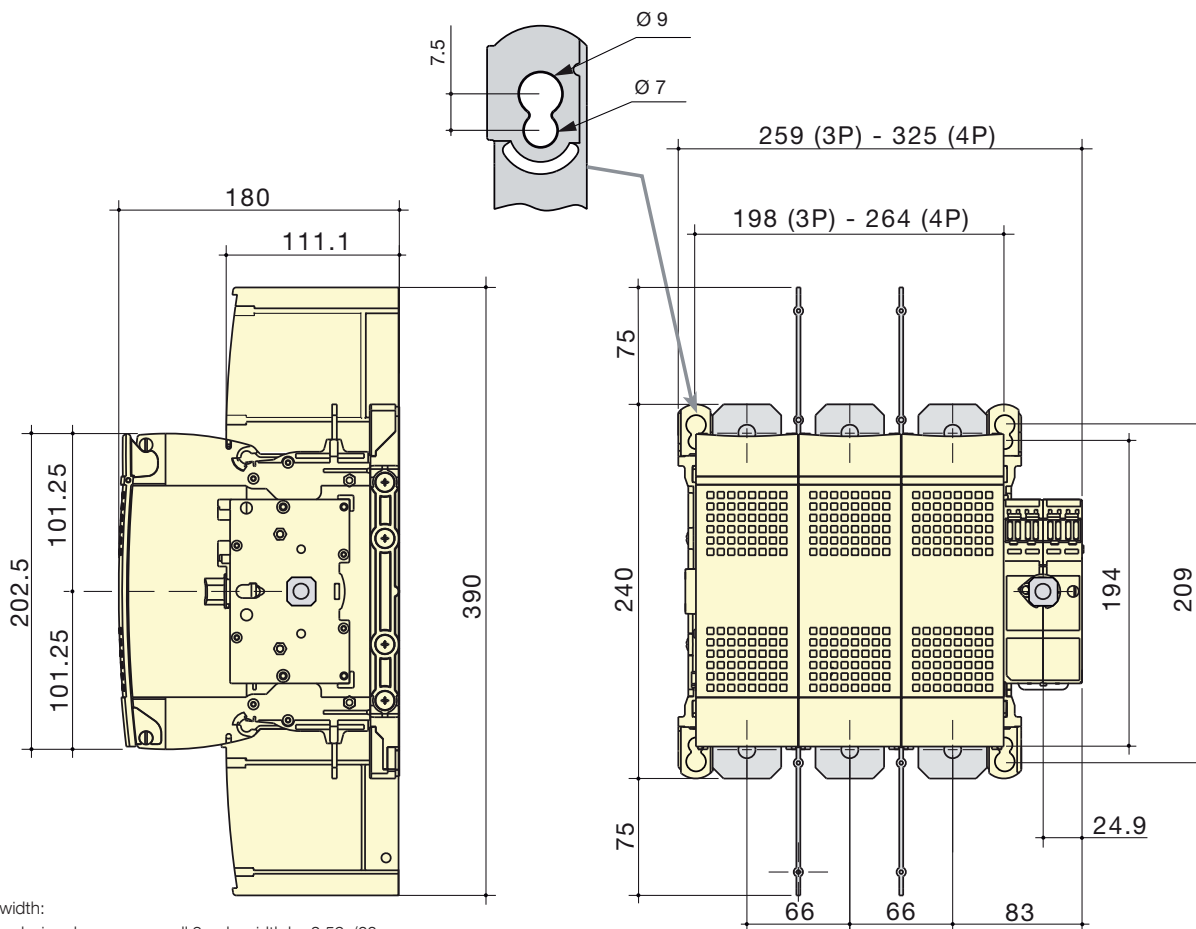
fuser-ul_003_a_1_x_cat

Note for width:

For 2 pole device decrease overall width by 1.96»/50mm.

For 4 pole device increase overall width by 1.96»/50mm.

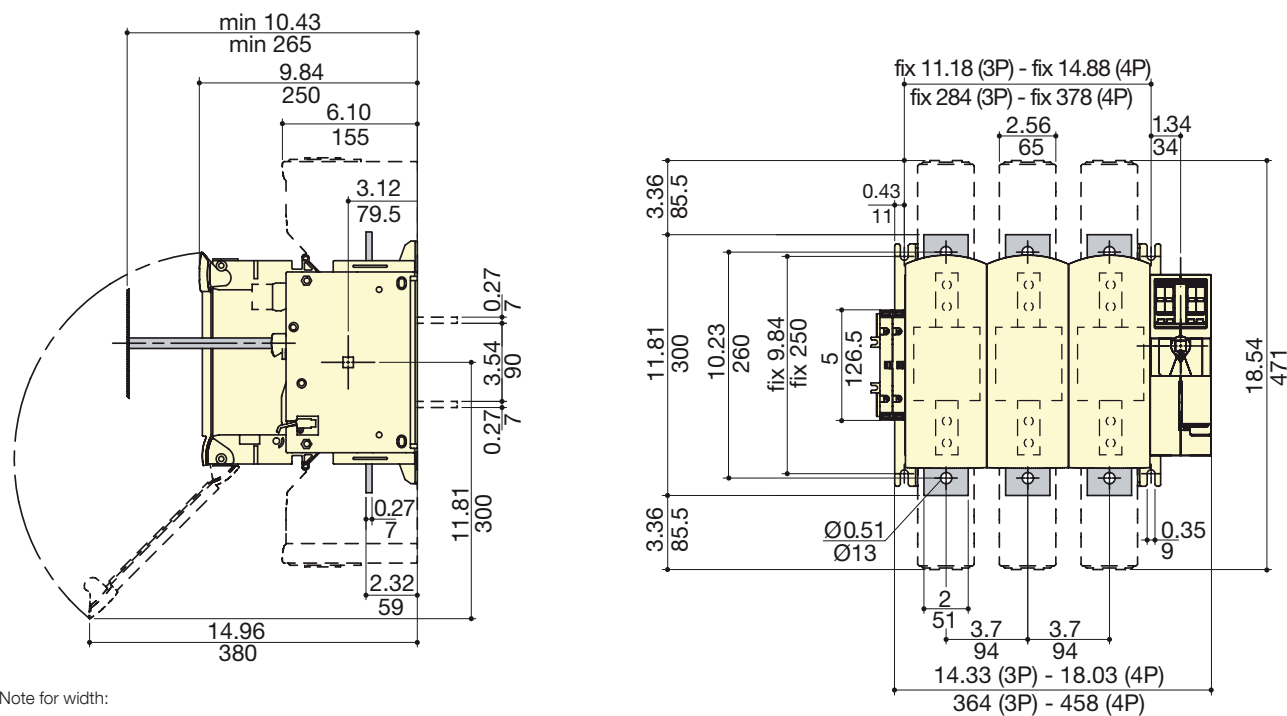
FUSERBLOC 400 A / J - Frame size 7



fuser-ul_004_c_1_x_cat

Note for width:
 For 2 pole device decrease overall 3 pole width by 2.59*/66mm.

FUSERBLOC 600 to 800 A / J - Frame size 8



fuser_631_b_1_gb_cat

Note for width:
 For 2 pole device decrease overall 3 pole width by 3.7*/94mm.